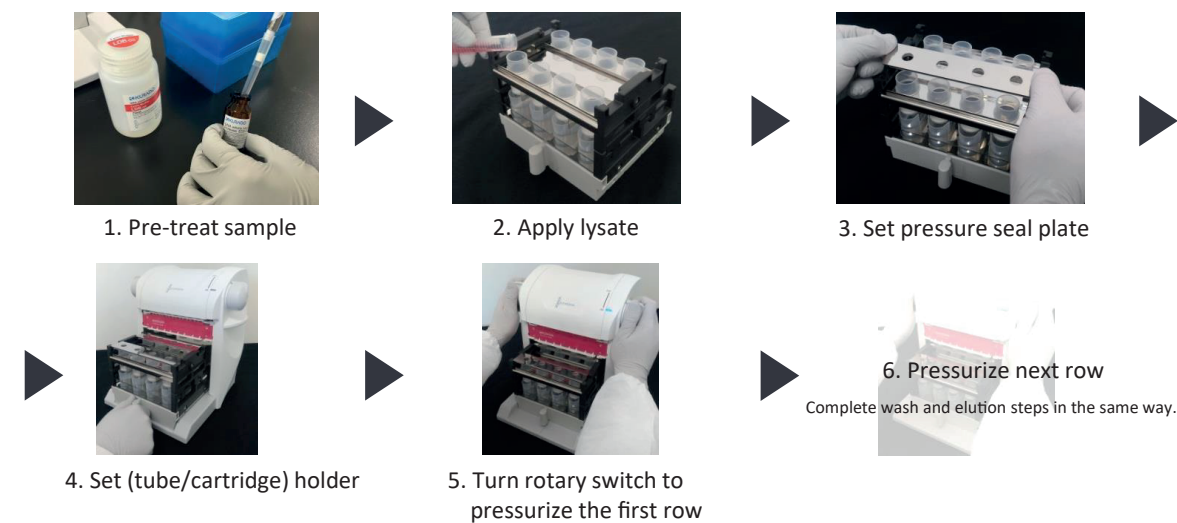


Pressurizing Process



Specific Isolation Kits and Optional Products

- QuickGene isolation kits are optimized for the system to isolate DNA in the shortest time and with the highest quality.
- Environmentally friendly isolation can be conducted without using hazardous organic solvents.

Samples	Isolation kits	Reference code	Isolation examples
human/animal whole blood, buffy coat, plasma, serum	QuickGene DNA Whole Blood Kit L	KQG-DB-L (For 48 samples)	Approx. 50 µg / 2 ml of whole blood
animal tissue, plants, insects, fish and shellfish, cheek swab, paraffin-embedded samples, cultured cells, bacteria, virus, materials, manufactured goods	QuickGene DNA Tissue Kit L	KQG-DT-L (For 48 samples)	Approx. 80 µg / 100 mg of mouse liver

\*The kits are not supplied with QuickGene-Mini8L. Select the desired kit(s) and order it(them) separately.

Optional Products	Reference Code	Contents
QuickGene-Mini S type compatible adapter Set	KQG-QG-Mini S AD set	cartridge holder, waste tube holder, collection tube holder, pressure adapter, pressure seal plate, separator, nozzle

Instrument	
Product	Reference Code
QuickGene Mini-8L	KQG-99-008L-B

QuickGene - Mini8L Specifications

- Overview**
- Throughput: 1 to 8 samples per run
- Physical specifications**
- Dimensions: 280(W)x260(D)x300(H) mm
  - Weight: Approx. 3.3 kg
- Physical specifications**
- Supply voltage : AC100~240V
  - Power supply frequency: 50/60 Hz
  - Operating conditions : Temperature: 15~30°C  
Humidity: 30~80% (non-condensing)

Contact information

ADS Biotec Limited  
40 Watt Road  
Hillington Park  
Glasgow, G52 4RY UK  
Registered in England and Wales

Phone: +44 (0)141 892 8800  
Fax: +44 (0)141 883 5967  
Email: info@adsbiotec.com  
Web: www.adsbiotec.com

Corporate Office

ADS BIOTEC Inc.  
7409 Irvington Road  
Omaha, NE 68122 USA  
Phone: 888-974-7483  
Email: info@adsbiotec.com  
Web: www.adsbiotec.com



Nucleic Acid Isolation System

QuickGene - Mini8L



Compact Device  
For Large Volume **Whole Blood**  
DNA Extraction



# Compact device for large volume samples. Getting high-yield of DNA at a single run.

QuickGene - Mini8L is a compact system requiring no centrifugation in the isolation process, giving less stress to samples and enabling rapid nucleic acid isolation.  
DNA can be easily isolated from various large scale samples including whole blood, tissue, plants and others.

## ■ Compact design

- The small, light weight QuickGene-Mini8L takes up minimal space on the lab bench and even in the clean bench.
- No need to move the samples from the lab bench without centrifugation throughout the whole isolation process.
- QuickGene-Mini8L is suitable for virus or contaminants sample because it can be used in a safety cabinet.



## ■ Revolutionary porous membrane

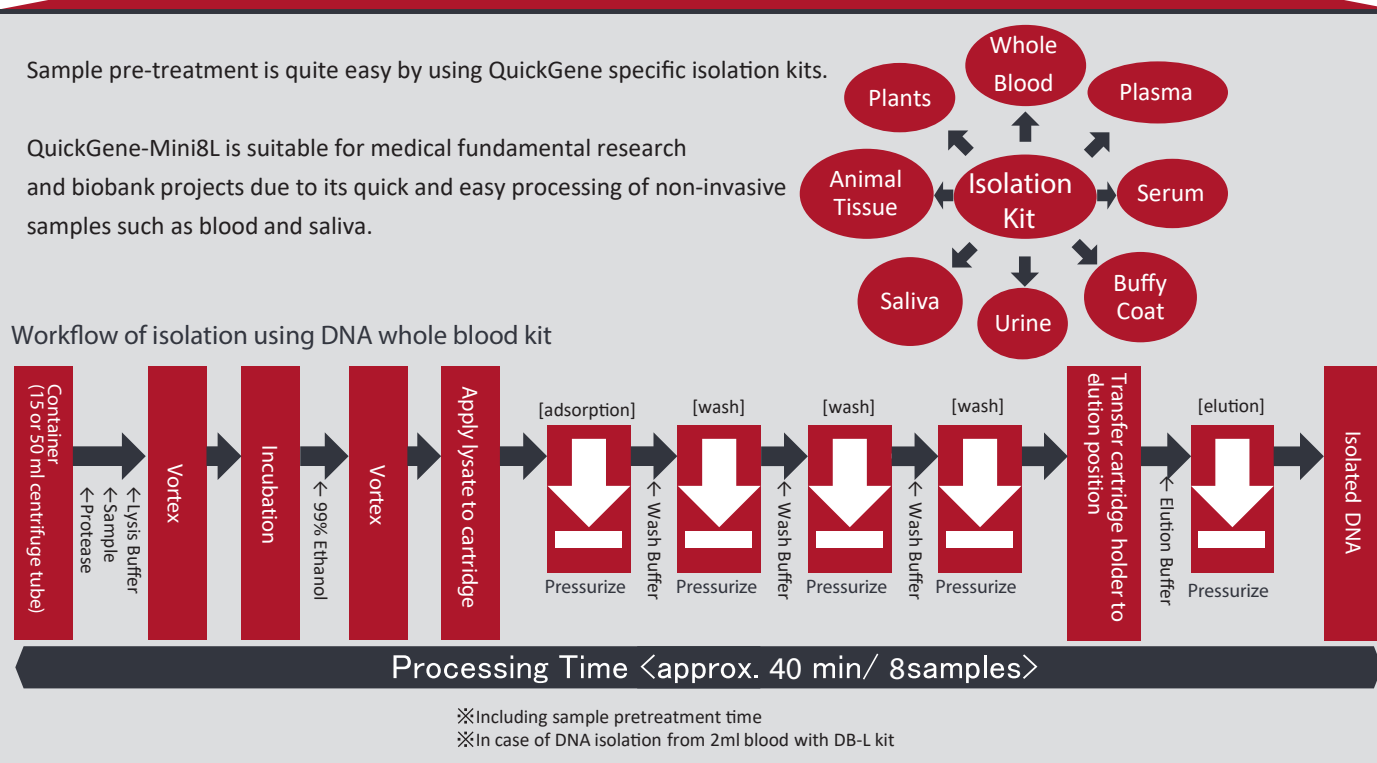
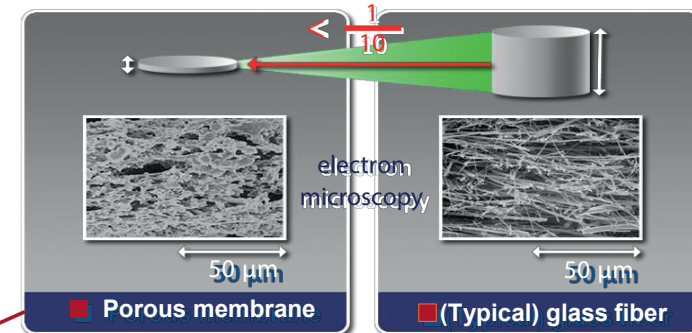
- The QuickGene-Mini8L uses patented porous membrane less than 100 μm thick.
- Depending on the outstanding adsorption/ desorption performances of the membrane, high-purity nucleic acid can be easily obtained in high yield at low pressure.
- The ultra thin membrane enables nucleic acid isolation in shorter time than when compared to glass fiber membranes.

### Key feature of porous membrane

- Hardly damaged and long DNA
- High speed processing with gentle air pressure
- Efficient DNA capture and desorption

QuickGene  
L-Cartridge

Quick and Reliable  
Processing



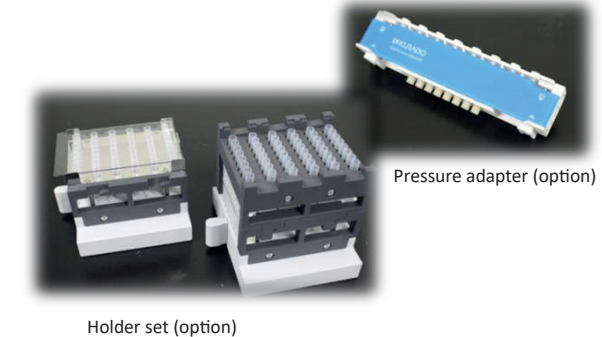
## ■ DNA isolation from large volume samples

QuickGene-Mini8L can be used for DNA isolation from large volume samples (ex. 2 ml of whole blood, 100 mg of mouse liver) and allows to get high-yield of DNA at a single run.

Using the optional parts, the device can also be applied for high-throughput nucleic acid isolation (max. 48 samples per run) from small volume samples (ex. 200 μl of whole blood, 5 mg of mouse liver) using multi-channel pipettes.

Large volume sample  
(ex. whole blood 2 ml)

Small volume sample  
(ex. whole blood 200 μl)



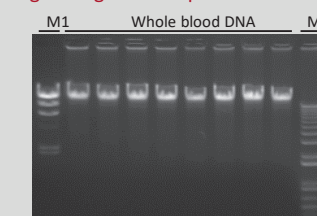
High-Quality and  
High-Yield DNA

QuickGene-Mini8L can be used to isolate high-yield, high-purity and long DNA fragments of maximum 90 kbp length. The isolated DNA can be directly applied to PCR, RT-PCR, next generation sequencing analysis, DNA microarray, restriction enzyme digestion, southern blotting, etc.

### DNA isolation from whole blood

Isolation kit: DNA Whole Blood kit L  
Sample: human fresh whole blood (2 ml)

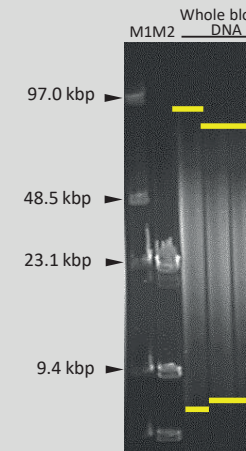
Agarose gel electrophoresis



DNA yield (μg)	64.41
Purity (280/260)	1.90
Purity (230/260)	1.98
Maximum length of DNA	≥ 90 kbp

Human fresh whole blood  
(Leucocyte:  $5.2 \times 10^3$  cells/μl)

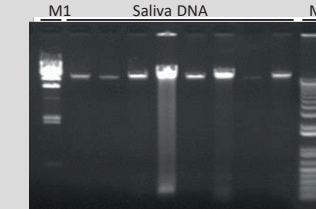
Pulsed-field gel electrophoresis



### DNA isolation from saliva

Isolation kit: DNA Tissue Kit L  
Sample: human saliva with Oragene® (2 ml)

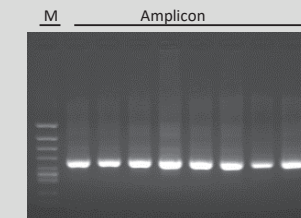
Agarose gel electrophoresis



Purity (280/260)	1.63
Purity (230/260)	1.94
Maximum length of DNA	≥ 90 kbp

Human saliva with Oragene®  
(Sampling by 8 different donors)

PCR of isolated saliva DNA



Pulsed-field gel electrophoresis

